



# CHILD HEALTH POLICY EXECUTION IN ENGA PROVINCE

*MY JOURNEY*

**2014-2021**

# Student Life : Graduating class of 2014





Student



Time to Walk The Talk



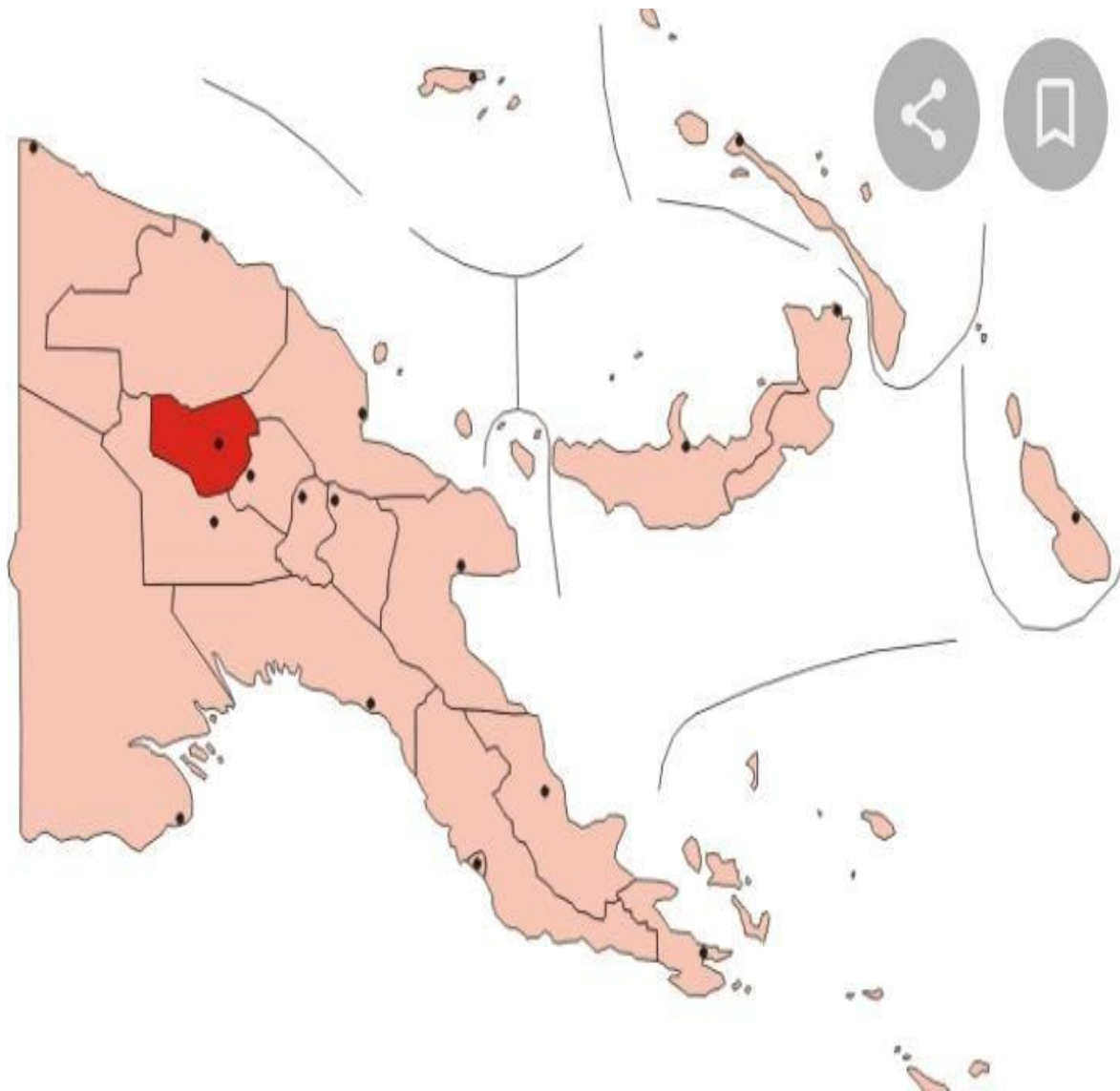
# PAPUA NEW GUINEA CHILD AND ADOLESCENT HEALTH

## POLICY AND PLAN 2021-2030

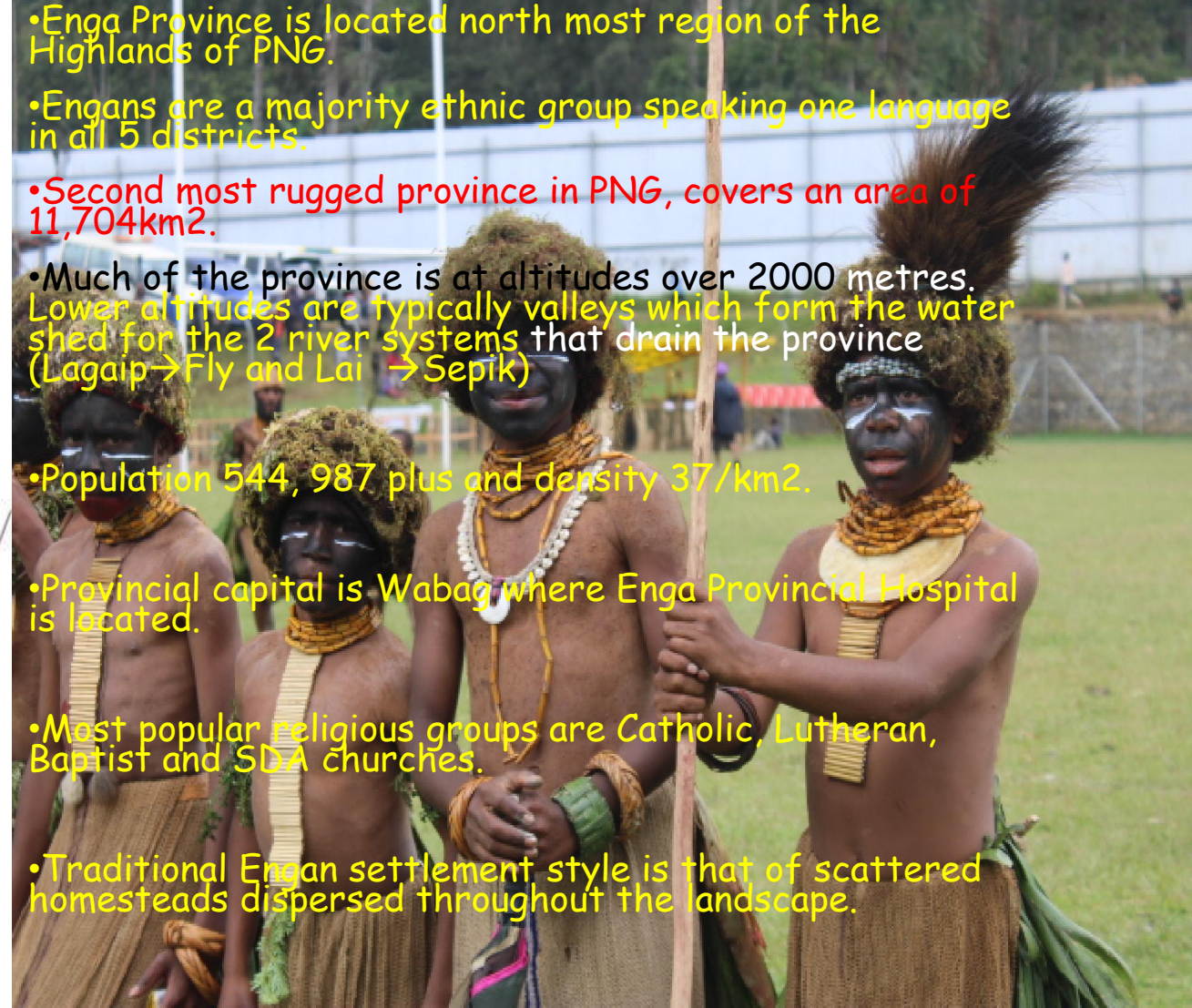


- The Perfect Guide to Better Child and Adolescent Care
  - BLUEPRINT FOR PROGRESS IN CHILD HEALTH CARE
    - MENTOR OUT IN THE OPEN FIELDS
- GOALS AND POLICY TO REDUCE NEWBORN AND CHILD MORTALITY AND IMPROVE THE QUALITY OF HEALTH, DEVELOPMENT AND WELL BEING OF CHILDREN AND ADOLESCENTS

# INTRODUCTION



- Enga Province is located north most region of the Highlands of PNG.
- Engans are a majority ethnic group speaking one language in all 5 districts.
- **Second most rugged province in PNG, covers an area of 11,704km<sup>2</sup>.**
- Much of the province is at altitudes over 2000 metres. Lower altitudes are typically valleys which form the water shed for the 2 river systems that drain the province (Lagaip → Fly and Lai → Sepik)
- Population 544, 987 plus and density 37/km<sup>2</sup>.
- Provincial capital is Wabag where Enga Provincial Hospital is located.
- Most popular religious groups are Catholic, Lutheran, Baptist and SDA churches.
- Traditional Engan settlement style is that of scattered homesteads dispersed throughout the landscape.





# Enga Provincial Hospital



## Brief history

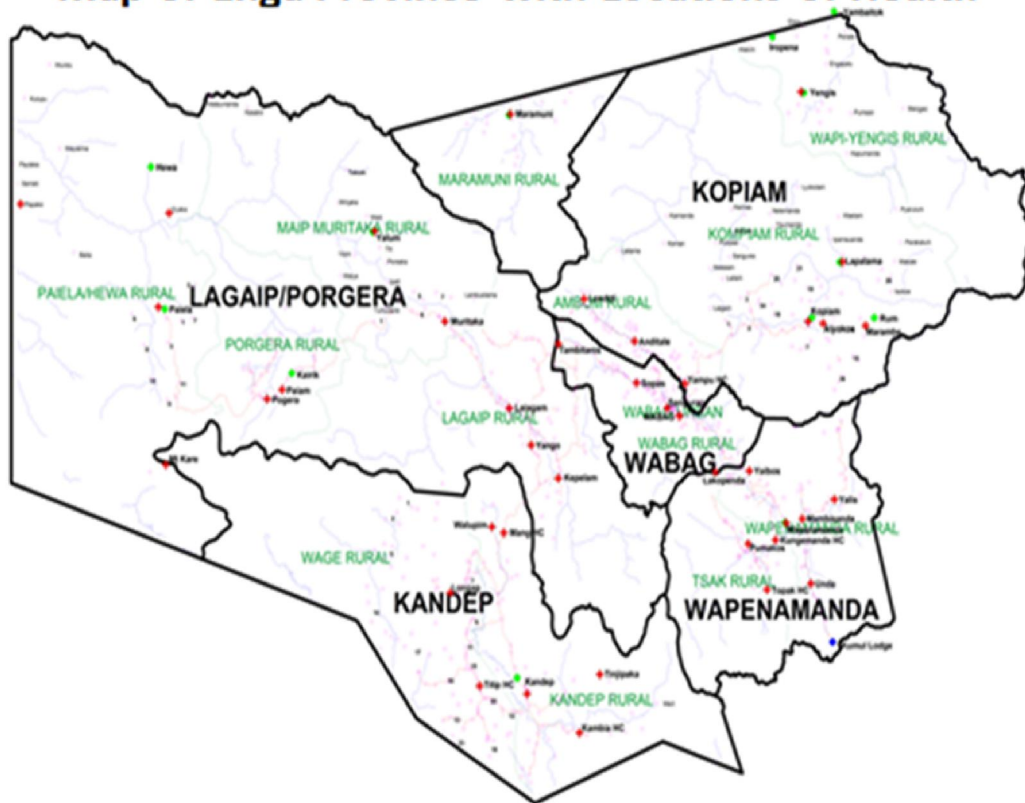
- Until 2001 this facility operated as a Health Centre with 1 general roster.
- 1 HEO(current PDCO).
- 2006- upgraded to a District Hospital.
- April 2014- declared Enga Provincial Hospital after inauguration of EPHA
- 70 bed capacity.
- No SMO Child Health until 2014.
- Acknowledge some doctors and HEOs (2006-2013) Dr Samiak Luke, Dr Robina Mulan, Dr John Warai, Dr Feka, Dr Marcus Rupert, HEO Mathew Kumi.



# Referral System in Enga

## Enga Health District Facilities

Map of Enga Province with Locations of Health



# 2014 : PROGRAM AREAS

## **CHAPTER 3**

3.1: EPI

3.2: NEONATAL CARE

3.3: IMPROVING QUALITY OF PAEDIATRIC AND CHILD HEALTH CARE

3.4: STM

3.5: PNEUMONIA & OTHER RESPIRATORY ILLNESSES

3.6: COVID 19 & PANDEMIC

3.7: MALARIA

3.8: TUBERCULOSIS

3.9: HIV IN CHILDREN

3.10: NUTRITION AND MALNUTRITION

3.11: ADOLESCENT & SCHOOL HEALTH

3.12: CHILDREN WITH DISABILITIES

3.13: CHILDREN WITH CHRONIC ILLNESSES

3.14: CHILDHOOD CANCER

3.15: CHILDREN WITH HEART DISEASE

3.16: CHILD PROTECTION & SOCIAL SERVICES

3.17: URBAN & ENVIRONMENTAL HEALTH

## **CHAPTER 4: HUMAN RESOURCES FOR CHILD HEALTH**

4.1: TRAINING OF PAEDIATRICIANS

4.2: KEY MESSAGES FOR PROVINCIAL & DISTRICT HEALTH

4.3: CONTINUING PROFESSIONAL DEVELOPMENT FOR CHW, NURSES, HEOS

## **CHAPTER 5: CHILD HEALTH RESEARCH**



# 3:1 EPI: STATIC CLINIC(PHR)

Old combined ANC/WBC/COPD



Extension of WBC/ANC- 2019



# 3.1: DISTRICT ROUNDS DURING OUTBREAKS

**PORGERA DISTRICT**



**KANDEP DISTRICT**



**LAIAGAM DISTRICT**



**AMBUM KOMPIAM DISTRICT**



## 3.2: NEONATAL CARE

- Neonatal specialist nurse:0
- LEVEL 1 in 2014

2016: Separate room for nursery

1 incubator/2 cots/1 resuscitation cot/2 PT lights/ NO separate staff



# 2022 Neonatal care



Separate roster and staff in 2019.

Infusion pump

CPAP Bubble

Oxygen concentrator

Resus cot

Phototherapy lights

Old incubator

5 cots

? Level 4

# Achievements alignment with CHPP

## 3.3: Improving quality of Paediatric and Child Health Care

### *Minimum standard SCN in District Hospitals*

### *Resuscitation cot/oxygen system/PT light*



## 3.3: Improving quality of Paediatric and Child Health Care: WHO Training



## 3.3 Quality Improvement



1. Quarterly death audits
2. Fumigation of SCN and General Ward once a year
3. Paediatric unit CME
4. Daily ward rounds

3.3/3.5 REDUCE CFR FOR PNEUMONIA-SOLAR-OXYGEN CONCENTRATOR SITES (6) BMGF 1.2% ✓



YAMPU- AMBUM DISTRICT



MAMBISANDA:  
Wapenamanda district



LAIAGAM DISTRICT



ENGA PROVINCIAL HOSPITAL:  
Wabag Town



YAPUM HC-KANDEP DISTRICT



Paiam DH, Porgera District



## 3.3 PHR

- Established PHR reporting in the province.
- Introduced PHR reporting system in Kompiam District Hospital, Mambisanda DH, Laiagam DH, Paiam DH, Yampu HC (2019-2021)



Yampu HC Paeds ward  
(PHR)



Sopas DH Paeds ward



Mambisanda DH Paeds ward (PHR)



Kompian DH Paeds ward  
(PHR)



Mambisanda DH SCN



Laiagam DH Paeds Ward  
(PHR)

### 3.3: COPD extension completed 2019



2014



2019

2014



2022



### 3.3 1<sup>ST</sup> IMCI TRAINING July 2015



## 3.8 TB: MDR TB ward plus Gene Xpert

**TB Diagnostic Machine - Gene – Xpert  
Machine (WHO)**



## 3.9 EID ESTABLISHED IN ENGA PROVINCE 14/8/2014



All RVI exposed referred to Mt Hagen for DBS  
Acknowledge Dr Mobumo Kiromat

## 3.10 Nutrition and Malnutrition



2014 Malnutrition CFR 45%  
Approached Hanifa (UNICEF) for inclusion of  
Enga in Therapeutic feeds supply 2014  
Symposium  
2016- 1<sup>st</sup> SAM training conducted in EP



## 3.10 Nutrition and Malnutrition



SAM training conducted for Porgera District staff  
2016 September.

PJV sponsored accommodation  
CFR 45% to 15%. More yet to do.

## 3.15 Children with Heart Disease



Combined Cardiac Clinic in Hagen  
2015- Dr Kilalang commenced 1st Cardiac clinic in Wabag

## 3.16 Child Protection and Social Services



Established in 2018 April. Red Cross assisted with Basic Office needs including Data Entry Computer and Printer.  
Located next to the Consultation Clinic and Outpatient.  
Clients from all 5 districts.

## 3.6 COVID 19 PANDEMIC: 2021



Thanks to  
EPG for  
assisting  
EPA

# Chapter 4: HR to Child Health



Continue to provide mentorship through clinical rounds to Sopas SON, Mendi SON, Tsak CHW, RHEO and RMOs and nurses.

# Chapter 5: Child Health Research

**Original research**

## Oxygen saturation reference ranges and factors affecting SpO<sub>2</sub> among children living at altitude

Vanessa Binene,<sup>1</sup> Doreen Panauwe,<sup>1</sup> Rhondi Kauna,<sup>1</sup> John D Vince,<sup>2</sup> Trevor Duke<sup>1,4</sup>


<sup>1</sup>Paediatrics, Wabag General Hospital, Wabag, Papua New Guinea  
<sup>2</sup>Clinical Sciences, University of Papua New Guinea, Port Moresby, Papua New Guinea

**ABSTRACT**  
**Aims** To determine reference values for oxygen saturation (SpO<sub>2</sub>) among healthy children younger than 5 years living at moderately high altitude in Papua New Guinea and to determine other factors that influence

**What is already known on this topic?**

- Oxygen saturation is lower at high altitude and in younger infants.

Key Words: Child Health Research

 **1160full\_211120\_17...**

5 pages • 1.2 MB • PDF 5:34 pm

### 3.3: Improving Quality Pediatric and Child Health care



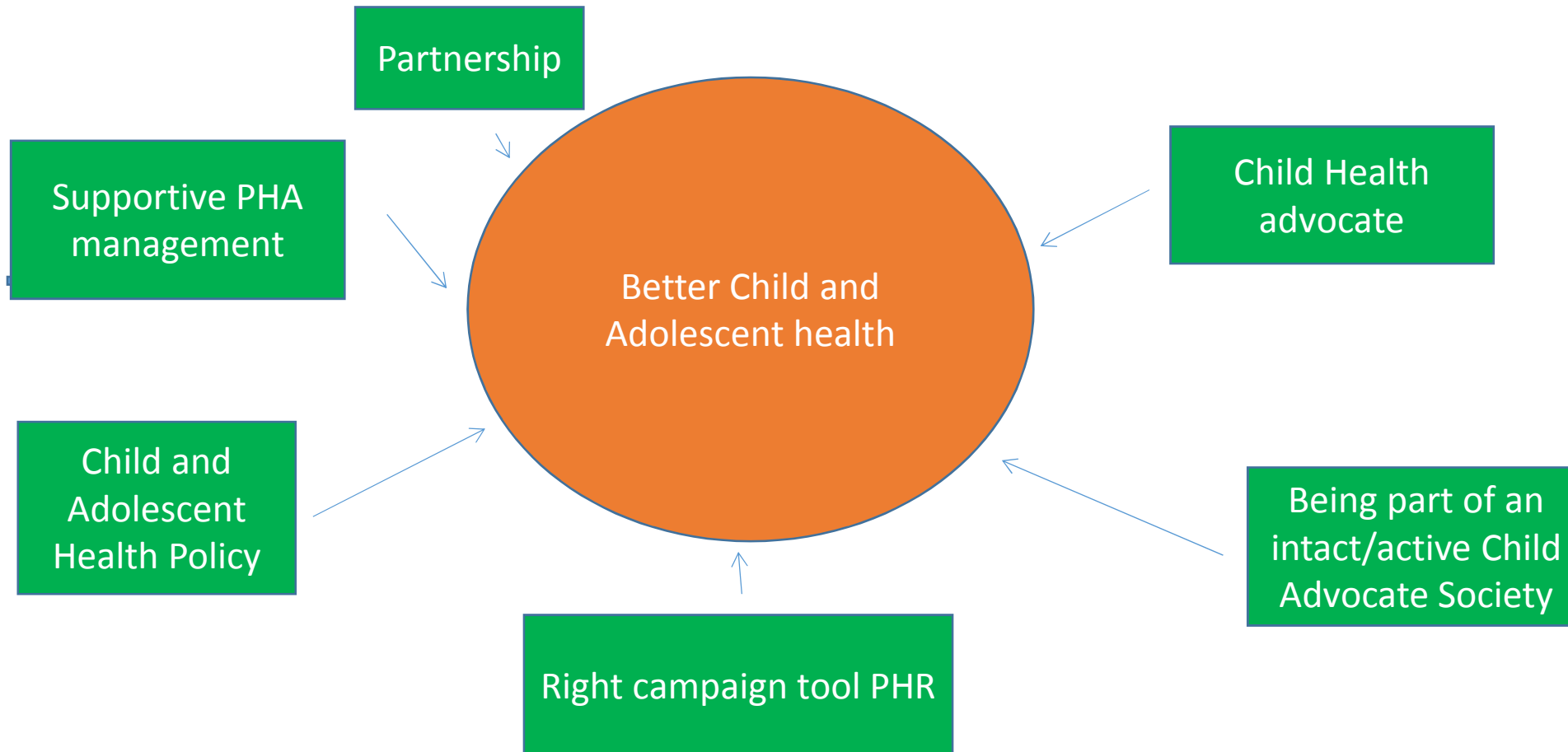
# Maintaining the Pediatric family/team spirit





# Summary

- Until 2014 Enga province child health services was still lagging behind.
- Some achievements though and success stories highlighted. More ??



# Challenges

- PROVIDING LEVEL 5 SERVICES /IN A LEVEL 3 INFRASTRUCTURE.
- Geographical, law and order, economical ,manpower .



2017, post election rampage damages to SCN wall glass.

# Recommendations

- Uphold the Child and Adolescent Care Policy.
- Partnership with stake holders/NGOs. A lot of unsettled issues are cross cutting.
- PHR system must be maintained.
- Pediatric Society meetings must be supported.
- More manpower needed.
- Maintain dialogue with other directorates in PHA especially Public health.

# Acknowledgements

- Enga Provincial Health Authority
- EPG
- Paediatric Society of PNG for mentorship
- NDoH
- Tribal Foundation PNG
- BMGF
- Catholic Health Services-EP
- Other Church run health services- Kompiam/Mambisanda
- HEO Mathew Kumi
- Pediatric Unit staff of Enga Provincial Hospital